

# Tintri Global Center™

A unified control center for your Tintri infrastructure

## What is Tintri Global Center?

Tintri Global Center is an intelligent control center that enables multiple Tintri VMstore systems to seamlessly function as one. It allows storage and virtualization administrators to globally manage and monitor their virtual infrastructure and supports up to 32 Tintri VMstores.

## Manage VM Policies at Scale

Tintri Global Center (TGC) enables easy management of VM policies at scale while also providing granular control over a virtualized environment no matter how large it grows. Tintri Global Center Service Groups provide a dynamic way to group and manage collections of VMs with common policy management needs such as snapshots or replication schedule. Group membership can be defined in several ways, such as VM name patterns, and can include VMs from across VMstores, hypervisors, and locations.

The ability to apply to apply policies at the service group level further simplifies management by ensuring that new VMs that join the group, conform to a defined policy (if desired). A change made at the Service Group level applies to all VMs in the group which makes policy management and enforcement a breeze. Different policies can also be applied at the individual VM level, even if the VM is part of a Service Group. Tintri Global Center policies are also compatible with VMware vMotion, allowing VMs to retain their policies, even when migrated to another VMstore.

At full scale, Tintri Global Center can manage up to 32 VMstores and over 100K VMs, making it an essential tool for any growing virtualized environment.

## Monitor VMstores and Individual VMs

Tintri Global Center monitors space utilization, performance metrics, VM activity and much more, for up to 32 VMstores all from a single place. An aggregated view of your entire environment, across all VMstores, informs IT teams of available capacity and performance at any given point in time. Tintri Global Center maintains historical performance of your VM storage and their VMs for up to 30 days and provides both a visualization of performance and other details in a clean and intuitive format.

### Simplicity

- Easily deploys as a self-contained virtual appliance
- Represents multiple VMstores as a single cluster for ease of management

### Managability

- Granular VM policy control that scales to more than 100,000 VMs
- Dynamic Service Group to simplify VM management
- Storage vMotion ready

### Insight

- Key metrics on performance and capacity usage at an aggregate VMstore level
- Deep visibility into each VM in your environment for quick troubleshooting
- Rich performance history (30 days) for trend and root cause analysis

### Scalability and Extensibility

- Scale VMstore storage without complex clustering - similarly to scaling compute with VMware vCenter
- A single control point for up to 32 Tintri VMstore systems and more than 100,000 resident VMs across multiple data centers
- Automate end-to-end workflows with PowerShell integration and RestAPI
- Centralize alert monitoring across all VMstores

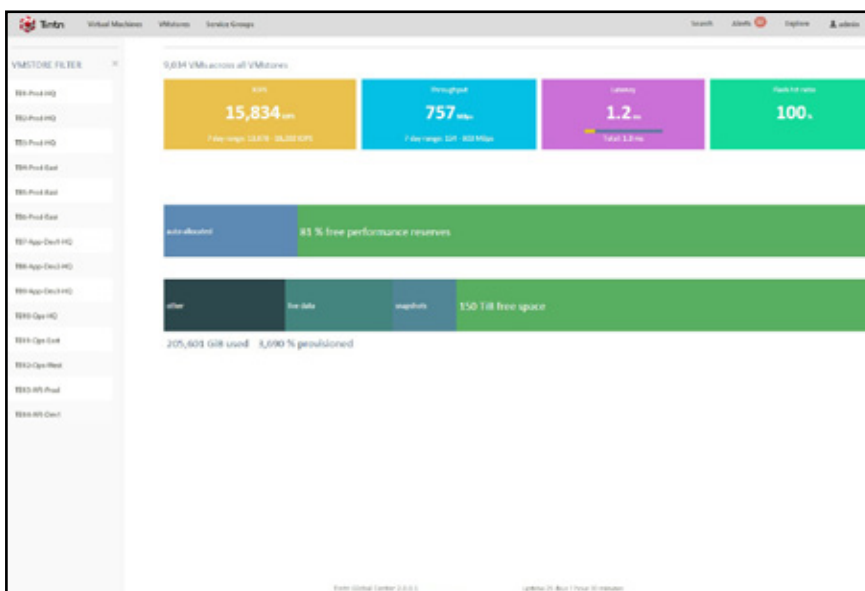


Figure 1 - Tintri Global Center - Top Level View - Aggregates VMstore details as well as quick examination of individual VMstores



Figure 2 - Tintri Global Center – Virtual Machines Dashboard - Shows aggregate information & top 10 VMs with high IOPS

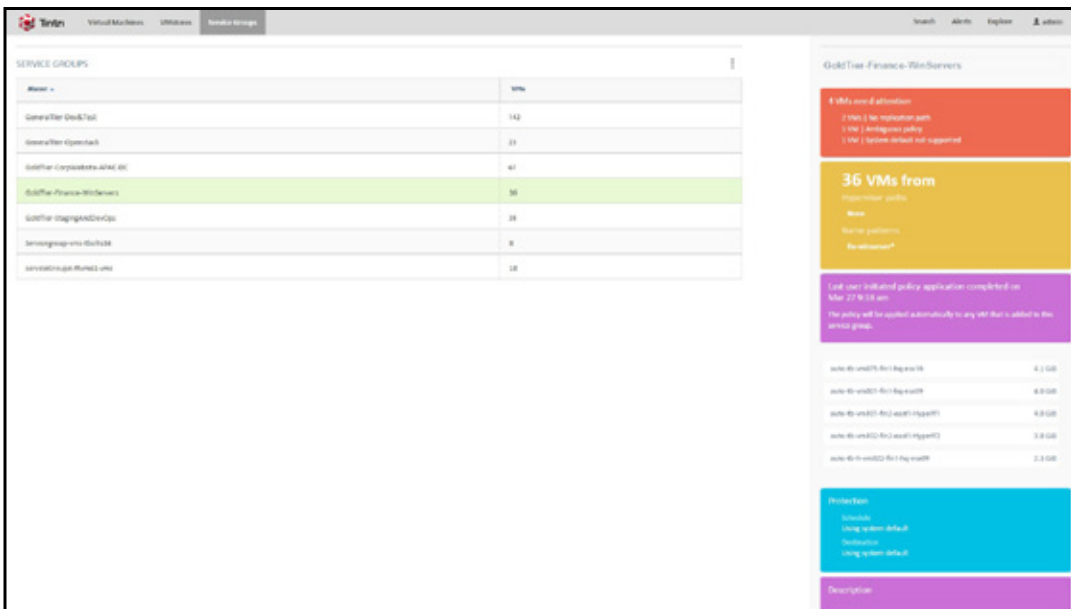


Figure 3 - Tintri Global Center – Service Groups – Quickly see details in a service group (GoldTier-Finance) such as VMs without replication and snapshot protection schedule

## Data Protection and Disaster Recovery Monitoring

When combined with ReplicateVM™, Tintri Global Center provides per-VM as well as per-VMstore replication monitoring and topology views for reporting on data protection and disaster recovery service level compliance.

## Multi-Tenancy

Tintri Global Center role-based access control enables large-scale deployments through multiple users roles and access controls. Microsoft Active Directory (AD) integration provides additional flexibility by linking Tintri Global Center roles to AD groups allowing organizations to leverage their existing authentication and user management infrastructure.

## Integrate into your existing scripts with REST API and PowerShell toolkit

Tintri Global Center exposes all of its capabilities through REST-APIs and commonly used ones are also available through PowerShell. API or PowerShell calls can be directed to either TGC (for aggregate information) or directly at a VMstore. The PowerShell cmdlets can be integrated with VMware PowerCLI as well as third party automation tools.

## Conclusion

Tintri Global Center expands the goals of smart storage by enabling IT to scale and control multiple VMstore systems from a single, intuitive platform. The mix of both end-to-end insight and granular control in an intuitive interface make Tintri Global Center an ideal control center for a range of individuals from storage, VM, operations, and cloud-related teams.

Tintri VMstore and Tintri Global Center together enable IT to scale virtualization and cloud environments without the challenges of a traditional scale-out storage cluster. As a result, Tintri can dramatically reduce the amount of time required to configure and oversee storage for virtualized environments, which can significantly lower IT costs and improve both performance and predictability across a virtualized infrastructure.

Contact us to schedule a demo of Tintri Global Center today.

*“Tintri Global Center gives us the perfect single-pane of glass monitoring that our operations folks needed. Being able to drill down and identify the root cause of an issue quickly, helps maintain SLAs and keep operations folks supporting the business instead of babysitting the infrastructure.”*

**—Matt Tehonica, Sr. Cloud Infrastructure Engineer at Peak 10**

*“Tintri Global Center provides a simple and informative single pane of glass management for managing more than one Tintri Unit (trust me you will have many :)”*

**—Firoze Borhat, Senior Virtualisation Engineer at Derivco**

*“Tintri Global Center has greatly simplified storage management in our private cloud by providing the single pane of glass we’ve been looking for.”*

**—Patrick Wloch, Sr. Infrastructure Engineer, Peak 10**



### Global HQ

303 Ravendale Dr.  
Mountain View, CA 94043  
United States  
+1 650-810-8200  
info@tintri.com

### EMEA Headquarters

27-28 Clements Lane  
London EC4N 7AE  
United Kingdom  
+44 (0) 203 053 0853  
emea@tintri.com

### APAC Headquarters

Level 18  
101 Collins Street  
Melbourne 3000 Vic  
+61 3 9653 9610  
apac@tintri.com

### Japan Headquarters

Level 6, Kishimoto Building  
2-2-1 Marunouchi, Chiyoda-ku,  
Tokyo 100-0005 Japan  
+81 (3) 6213-5400  
info.japan@tintri.com

[www.tintri.com](http://www.tintri.com)

Tintri, the Tintri logo, Tintri VMstore, Tintri Global Center, CloneVM, ReplicateVM, SecureVM and SnapVM are trademarks or registered trademarks of Tintri, Inc. All other trademarks or service marks are the property of their respective holders and are hereby acknowledged.  
©2015 Tintri, Inc. All rights reserved. 15051T10078